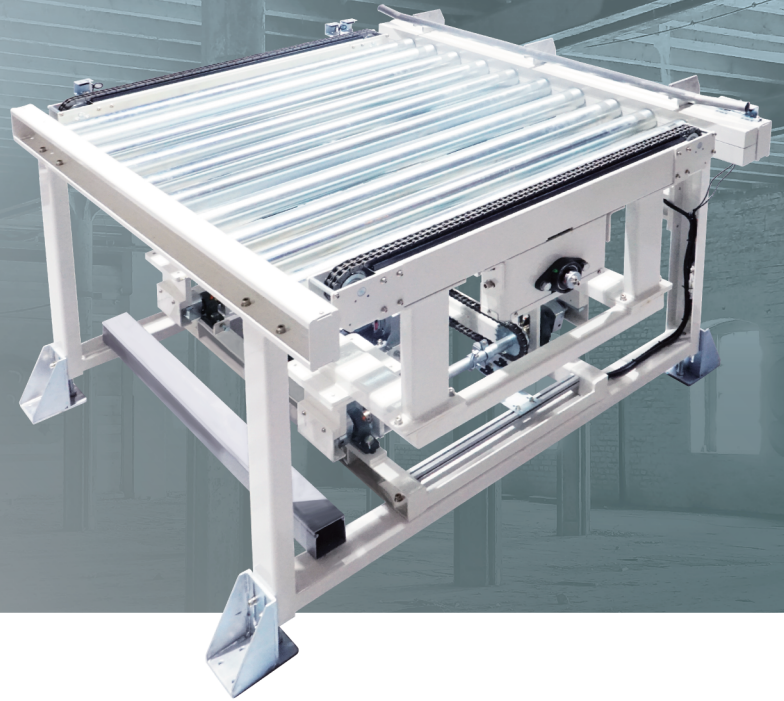
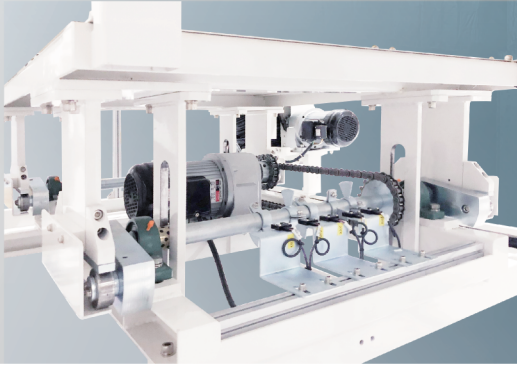


# 輸送移載機

## Conveyor Transfers



### 特性 Characteristic

1. 輸送移載機可以使空載及滿載棧板在 AS/RS 輸送系統中進行 90 度橫移運行。  
The conveyor transfer machine can make the empty and full pallets move 90 degrees in the ASRS conveyor system.
2. 移載輸送機採用平板 RF 鏈條輸送機或滾輪式輸送機，鏈條輸送機有兩列或三列規格，貨物重量超過 1000kg 或是棧板強度不足，我們會建議使用三列規格。滾輪採用雙排鏈，機身與滾輪獨立分離，易於保養及維修。  
The transfer conveyor adopts a flat RF chain conveyor or a roller conveyor, the specification of chain conveyor is two-row or three-row. If the weight of the cargo exceeds 1000kg or the pallet strength is insufficient, we will recommend using three-row specifications. The roller adopts a double chain, and the machine body and the roller are separated independently, which is easy to maintain and repair.
3. 主體結構採型鋼組合而成，昇降裝置採用電動馬達驅動方式，昇降框架四頂昇點使用滾針軸承上偏心提昇，框架平均受力及平穩垂直升降。※重負載採用電動油壓升降。  
The main structure is made of profiled steel. The lifting device is driven by an electric motor. The four lifting points of the lifting frame are eccentrically lifted by needle bearings, and the frame is average force and vertically lifted smoothly. ※Heavy load adopts electric hydraulic lifting.
4. 移載輸送機標準速度 12m/min。  
※可依客戶速度需求訂定輸送機速度。  
The standard speed of the transfer conveyor is 12m/min.  
※The conveyor velocity can be set according to the velocity requirements of customers.
5. 可適用於平板 RF 鏈條輸送機及滾輪式輸送機。  
Suitable for flat RF chain conveyors and roller conveyors.